

Toledo-Lucas County Health Department Seasonal Influenza Activity Summary

MMWR Week 18 April 30-May 6, 2017

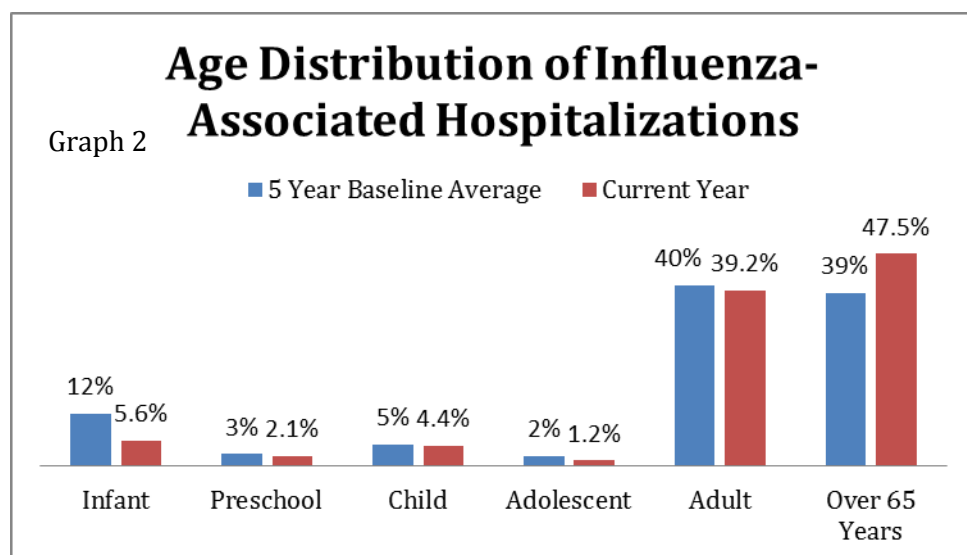
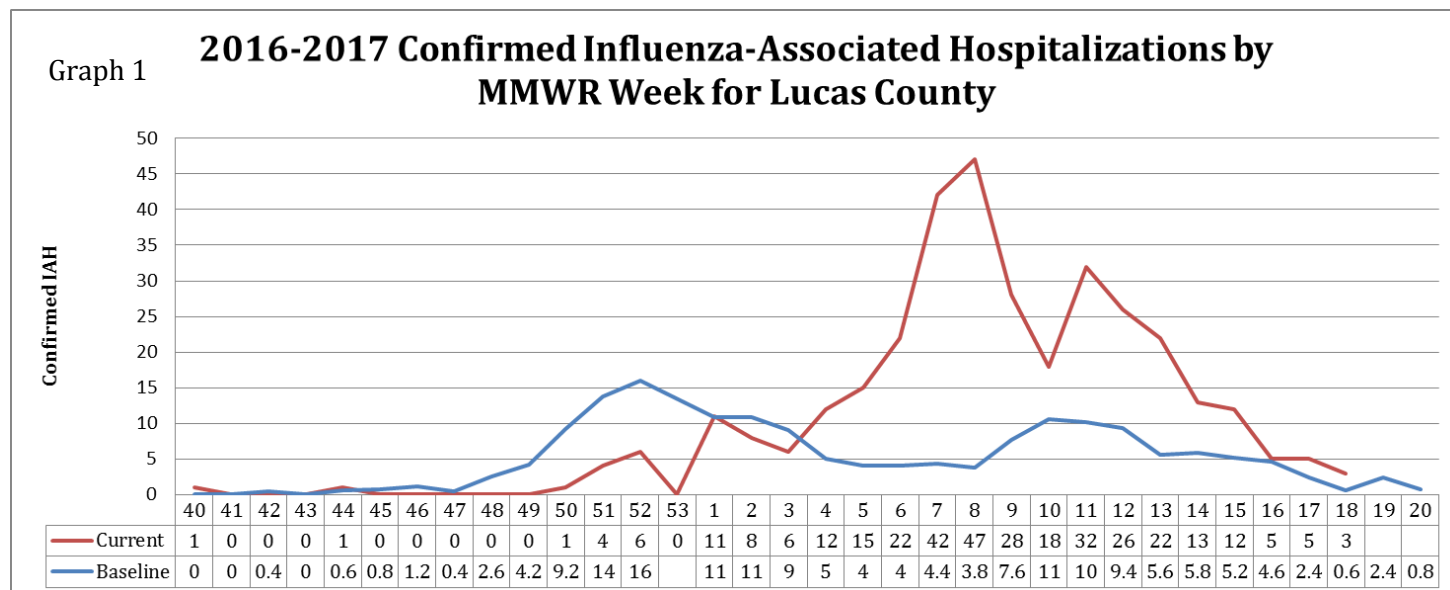
Local Surveillance:

Current Influenza Activity Levels:

- Lucas County had 3 confirmed Influenza-associated Hospitalizations (IAH) reported, bringing the total to 340 as of May 6, 2017.
- Gender Distribution of Cases: 59% female, 41% male

Lucas County accounts for 3.9% of the IAH reported in Ohio.

Graph 1 illustrates the current confirmed Influenza-Associated Hospitalizations compared to baseline, which is a five year average.



MAIN OFFICE

635 North Erie Street
Toledo, Ohio 43604
419.213.4100

WESTERN CLINIC SITE

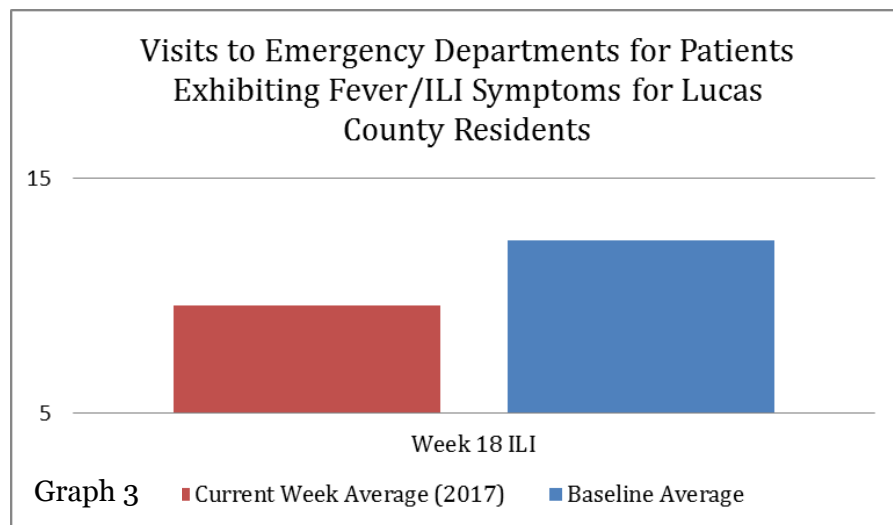
330 Oak Terrance Blvd.
Holland, Ohio 43528
419.213.6255

For more information on state and local flu surveillance please contact:
Lauren Wagener (419) 213-4264 WagenerL@co.lucas.oh.us

Toledo-Lucas County Health Department Seasonal Influenza Activity Summary

MMWR Week 18 April 30-May 6, 2017

The number of emergency department visits with patients exhibiting fever/ILI symptoms was below baseline for MMWR 18. ILI (Influenza-Like Illness) is defined as a *fever greater than or equal to 100 degrees F AND a cough or sore throat*. (Graph 3)



Summary of State Data: Current Ohio Activity Level (Geographic Spread) – Local

Definition: Increased ILI in 1 region; ILI activity in other regions is not increased AND recent (within the past 3 weeks) lab evidence of influenza in region with increased ILI, OR 2 or more institutional outbreaks (ILI or lab confirmed) in 1 region; ILI activity in other regions is not increased AND recent (within the past 3 weeks) lab evidence of influenza in region with the outbreaks; virus activity is no greater than sporadic in other regions.

During MMWR Week 18, Ohio public health surveillance data sources indicate decreased activity for influenza-like illness (ILI) in outpatient settings reported by Ohio's Sentinel ILINet providers, Athenahealth medical claims data and all other data sources. The percentage of emergency department (ED) visits with patients exhibiting constitutional symptoms and fever and ILI specified ED visits decreased and are below baseline levels. Weekly Influenza-associated hospitalization numbers decreased but are still above the *seasonal threshold. There were 61 influenza-associated hospitalizations and 1 influenza-associated pediatric death reported during MMWR Week 18.

State Surveillance:

- ODH lab has reported 1263 influenza tests from specimens sent from various submitters. 2016-2017 influenza season positive results: (6) A/pdmH1N1; (760) A/H3N2; (259) Influenza B; (through 5/6/2017).
- The National Respiratory and Enteric Virus Surveillance System (NREVSS) has reported 58,344 influenza tests performed at participating facilities. 2016-2017 influenza season positive results: (5) H1N1, (651) A/H3N2, (4,190) Flu A Not Subtyped, and (3,705) Flu B (through 5/6/2017).
- 7 influenza-associated pediatric mortalities have been reported during the 2016-2017 season (through 5/6/2017).
- No novel influenza A virus infections have been reported during the 2016-2017 season (through 5/6/2017).
- Incidence of confirmed influenza-associated hospitalizations in 2016-2017 season = 8637 (through 5/6/2017).

Toledo-Lucas County Health Department Seasonal Influenza Activity Summary

MMWR Week 18 April 30-May 6, 2017

Regional Surveillance*: During week 17 (April 23rd – April 29th, 2017), the proportion of outpatient visits for ILI in Region 5 (Ohio is in Region 5) was 1.1%, which is below the regional baseline of 1.9%. Ohio reported Regional Activity (Local for Week 18). Michigan and West Virginia reported Local Activity. Indiana and Kentucky reported Sporadic Activity.

National Surveillance*: During week 17 (April 23rd – April 29th, 2017), 46 U.S. states reported Minimal influenza activity and 4 states reported Low Activity. The proportion of outpatient visits for ILI was 1.4%, which is below the national baseline of 2.2%. All 10 HHS regions reported ILI levels below their region-specific baseline level. The most frequently identified influenza virus type reported by public health laboratories was influenza B.

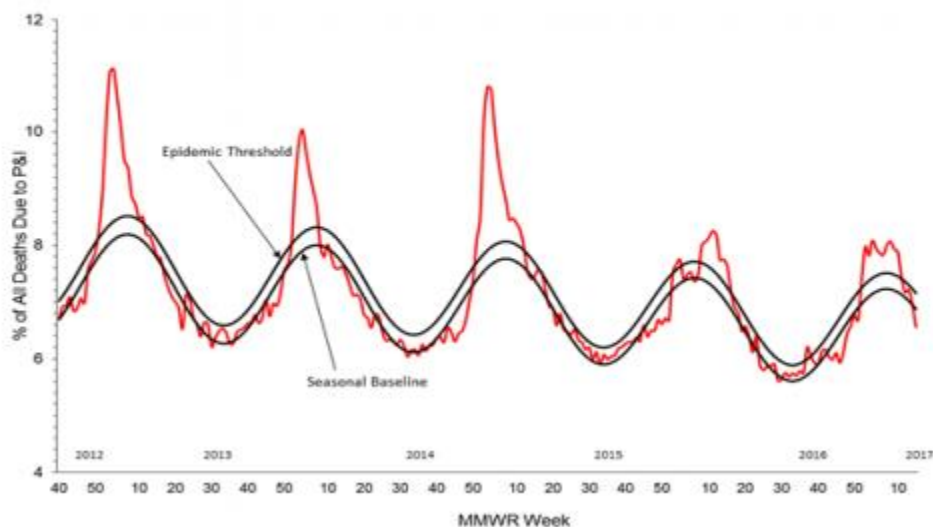
*Regional and National surveillance data are reported one week later than Ohio state and local data

Flu Information:

Influenza Virus Characterization:

CDC has antigenically characterized 1,577 influenza viruses [259 influenza A (H1N1)pdm09, 679 influenza A (H3N2), and 639 influenza B viruses] collected by U.S. laboratories since October 1, 2016. 95% of the Influenza B viruses that have been antigenically characterized by CDC were similar to viruses included in either the trivalent or quadrivalent 2016-17 influenza vaccine. 97% of the influenza A viruses characterized matched the viruses included in the 2016-17 influenza vaccine.

Pneumonia and Influenza Mortality from
the National Center for Health Statistics Mortality Surveillance System
Data through the week ending April 15, 2017, as of May 4, 2017



State, Regional and National data is provided by the Ohio Department of Health

[ODH Influenza Activity Summary MMWR week 18](#)