

# Toledo-Lucas County Health Department Seasonal Influenza Activity Summary

MMWR Week 17 April 23-29, 2017

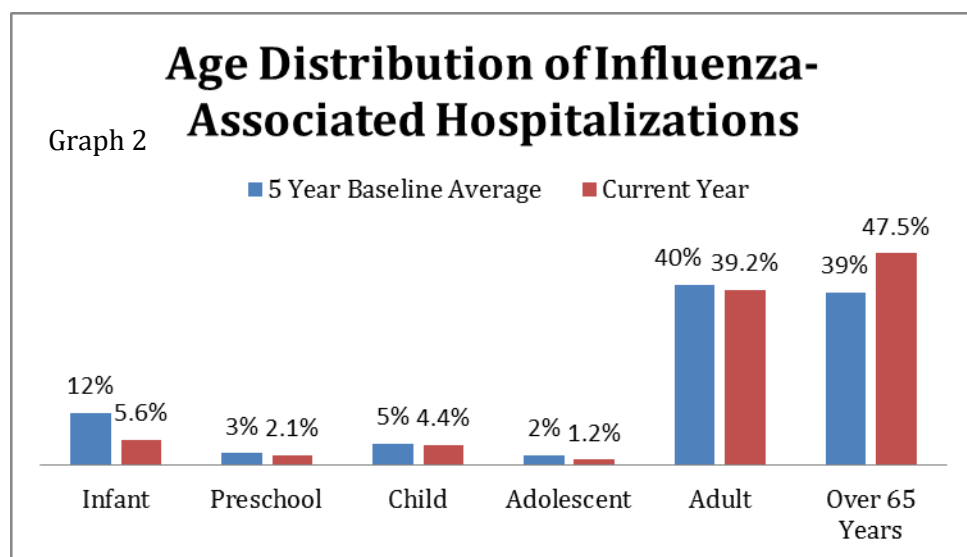
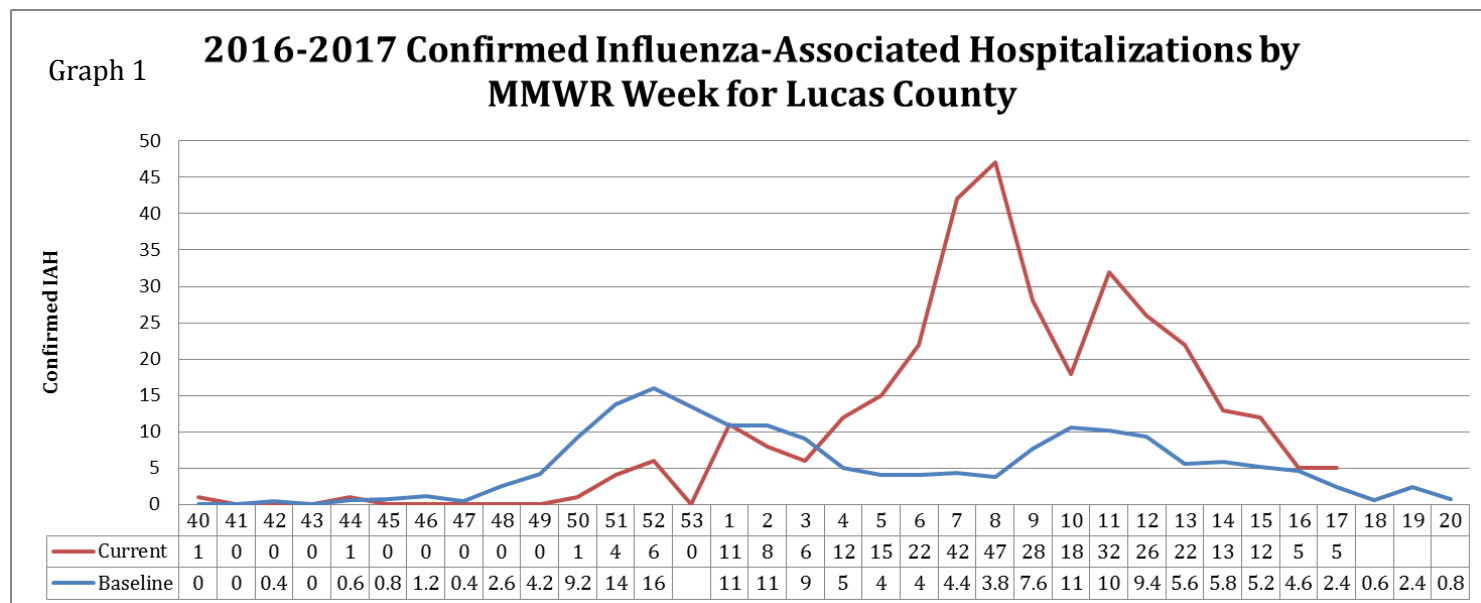
## Local Surveillance:

### Current Influenza Activity Levels:

- Lucas County had 5 confirmed Influenza-associated Hospitalizations (IAH) reported, bringing the total to 337 as of April 22, 2017.
- Gender Distribution of Cases: 59% female, 41% male

Lucas County accounts for 3.9% of the IAH reported in Ohio.

Graph 1 illustrates the current confirmed Influenza-Associated Hospitalizations compared to baseline, which is a five year average.



#### MAIN OFFICE

635 North Erie Street  
Toledo, Ohio 43604  
419.213.4100

#### WESTERN CLINIC SITE

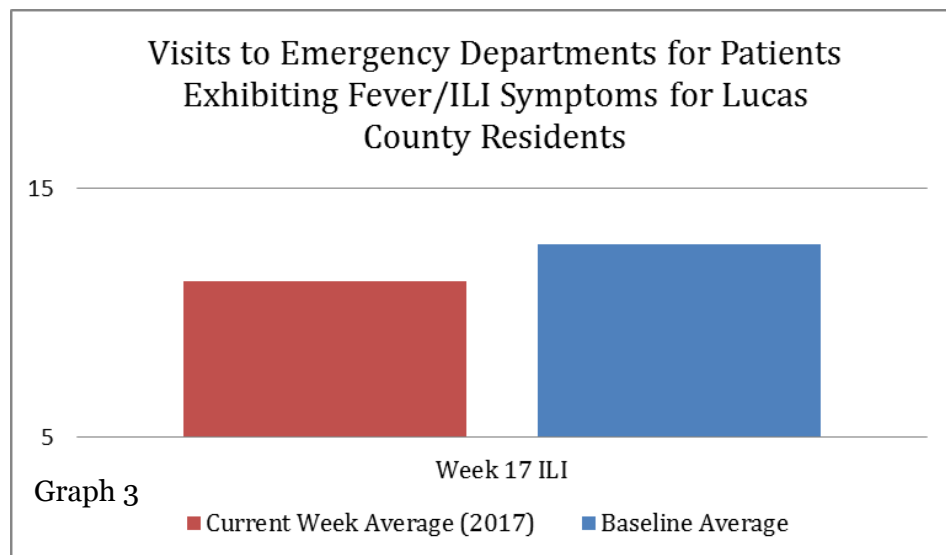
330 Oak Terrance Blvd.  
Holland, Ohio 43528  
419.213.6255

For more information on state and local flu surveillance please contact:  
Lauren Wagener (419) 213-4264 WagenerL@co.lucas.oh.us

# Toledo-Lucas County Health Department Seasonal Influenza Activity Summary

MMWR Week 17 April 23-29, 2017

The number of emergency department visits with patients exhibiting fever/ILI symptoms was below baseline for MMWR 17. ILI (Influenza-Like Illness) is defined as a *fever greater than or equal to 100 degrees F AND a cough or sore throat*. (Graph 3)



**Summary of State Data:** Current Ohio Activity Level (Geographic Spread) – Regional Definition: Increased ILI in > 2 but less than half of the regions AND recent (within the past 3 weeks) lab confirmed influenza in the affected regions, OR institutional outbreaks (ILI or lab confirmed) in > 2 but less than half of the regions AND recent (within the past 3 weeks) lab confirmed influenza in the affected regions.

During MMWR Week 17, Ohio public health surveillance data sources indicate decreased activity for influenza-like illness (ILI) in outpatient settings reported by Ohio's Sentinel ILINet providers, Athenahealth medical claims data and all other data sources. The percentage of emergency department (ED) visits with patients exhibiting constitutional symptoms and fever and ILI specified ED visits decreased and are below baseline levels. Weekly Influenza-associated hospitalization numbers decreased but are still above the \*seasonal threshold. There were 148 influenza-associated hospitalizations reported during MMWR Week 17.

## State Surveillance:

- ODH lab has reported 1251 influenza tests from specimens sent from various submitters. 2016-2017 influenza season positive results: (6) A/pdmH1N1; (758) A/H3N2; (255) Influenza B; (through 4/29/2017).
- The National Respiratory and Enteric Virus Surveillance System (NREVSS) has reported 57,546 influenza tests performed at participating facilities. 2016-2017 influenza season positive results: (5) H1N1, (649) A/H3N2, (4187) Flu A Not Subtyped, and (3685) Flu B (through 4/29/2017).
- 6 influenza-associated pediatric mortalities have been reported during the 2016-2017 season (through 4/29/2017).
- No novel influenza A virus infections have been reported during the 2016-2017 season (through 4/29/2017).
- Incidence of confirmed influenza-associated hospitalizations in 2016-2017 season = 8581 (through 4/29/2017).

# Toledo-Lucas County Health Department Seasonal Influenza Activity Summary

MMWR Week 17 April 23-29, 2017

**Regional Surveillance\*:** During week 16 (April 16th – April 22nd, 2017), the proportion of outpatient visits for ILI in Region 5 (Ohio is in Region 5) was 1.4%, which is below the regional baseline of 1.9%. Ohio, Kentucky, and Pennsylvania reported Regional Activity. Michigan and West Virginia reported Local Activity. Indiana reported Sporadic Activity.

**National Surveillance\*:** During week 16 (April 16th – April 22nd, 2017), 46 U.S. states reported Minimal influenza activity and 4 states reported Low Activity. The proportion of outpatient visits for ILI was 1.8%, which is below the national baseline of 2.2%. Two HHS regions reported ILI levels at their region-specific baseline level. The most frequently identified influenza virus type reported by public health laboratories was influenza B.

\*Regional and National surveillance data are reported one week later than Ohio state and local data

## **Flu Information:**

### **Influenza Virus Characterization:**

CDC has antigenically characterized 1,479 influenza viruses [253 influenza A (H1N1)pdm09, 647 influenza A (H3N2), and 579 influenza B viruses] collected by U.S. laboratories since October 1, 2016.

97% of the Influenza B viruses that have been antigenically characterized by CDC were similar to viruses included in either the trivalent or quadrivalent 2016-17 influenza vaccine. 97% of the influenza A viruses characterized matched the viruses included in the 2016-17 influenza vaccine.

**State, Regional and National data is provided by the Ohio Department of Health**

[ODH Influenza Activity Summary](#)